

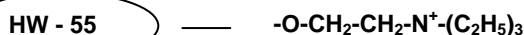


Zettachring 6, 70567 Stuttgart, Germany  
 Tel: +49-711-13257-0 Fax: +49-711-13257-89  
 E-Mail: info.tbg@tosoh.com  
 Web: www.tosohbioscience.com

3604 Horizon Drive, Suite 100, King of Prussia, PA 19406, USA  
 Tel: +1-484-805-1219 Fax: +1-610-272-3028  
 E-Mail: info.tbl@tosoh.com  
 Web: www.tosohbioscience.com

## PRODUCT SPECIFICATION SHEET

**Product Name:** Toyopearl® QAE-550 (strong anion exchange resin)



<b>Part Numbers:</b>	43271	Toyopearl QAE-550C, 100 µm, 100 mL
	14026	Toyopearl QAE-550C, 100 µm, 250 mL
	14704	Toyopearl QAE-550C, 100 µm, 1 L
	14027	Toyopearl QAE-550C, 100 µm, 5 L
	21364	Toyoscreen QAE-650C, 1 mL x 6 ea.
	21365	Toyoscreen QAE-650C, 5 mL x 6 ea.
	21392	Toyoscreen IEC Anion Mix Pack, 1 mL x 3 grades x 2 ea. (DEAE, SuperQ, QAE)
	21393	Toyoscreen IEC Anion Mix Pack, 5 mL x 3 grades x 2 ea. (DEAE, SuperQ, QAE)
	21396	Toyoscreen IEC Mix Pack, 1 mL x 6 grades x 1 ea. (DEAE, SuperQ, QAE, CM, SP650, SP-550)
	21397	Toyoscreen IEC Mix Pack, 5 mL x 6 grades x 1 ea. (DEAE, SuperQ, QAE, CM, SP650, SP-550)
	21400	Toyoscreen Column Holder
	42194	Toyoscreen Column Holder with fittings

**Product Description:** Toyopearl is a methacrylic polymer incorporating high mechanical and chemical stability. Resins are available as non-functionalised “HW” series resins for size exclusion separations, and derivatised with surface chemistries for alternative modes of chromatography such as ion exchange, hydrophobic interaction or affinity separations.

**Toyopearl QAE-550** chromatographic resin is designed for anion exchange chromatography. This chromatographic mode separates molecules on the basis of ionic interactions between the sample and the resin. The separation is usually accomplished in buffered aqueous solution with a gradient of increasing ionic strength. Alternatively, pH adjustment may be used for control of elution.

**Formulation:** Particulate resin (spherical), available in particle sizes (mean diameter):  
 100 µm = “C” grade  
 Supplied as slurry in 20 % ethanol (v/v).

### Physicochemical Specifications:

▪ Appearance	White resin slurry which settles upon standing
▪ Particle Size Distribution (>80 % within range)	50 – 150 µm for QAE-550C
▪ Exclusion Limit	7 x 10 <sup>5</sup> Dalton (globular protein)
▪ Mean Pore Diameter	500 Å
▪ Pressure drop across the column	max. 7 bar (recommended)
▪ Operating Linear Flowrate	normally 10 – 600 cm/hour (depending on particle size)
▪ Ion Exchange Capacity	0.33 ± 0.05 meq/mL
▪ Protein Adsorption Capacity	70 ± 10 mg/mL (Bovine Serum Albumin)
▪ Bacterial Count	≤ 100 CFU/mL

▪ Endotoxin Concentration	≤ 10.0 endotoxin units/mL
▪ Pack sizes and type	100 mL, 250 mL, 1 L, 5 L, 50 L Packed in virgin Polyethylene container with Polypropylene cap.
▪ Resin Volume per Container	The indicated volume is the settled resin volume.
▪ Shipping Solvent	72 % (v/v) slurry in 20 % (v/v) ethanol
▪ Long Term Storage Conditions	20 % (v/v) ethanol
▪ Cleaning in Place	0.1 M NaOH or 0.1 M HCl
▪ Foreign Substance	not observed, no visual evidence
▪ Eluable Matter	< 0.2 %
▪ Shelf Life Stability	Minimum 5 years

**For detailed test procedures please refer to Regulatory Support File BB-MF-3907.**